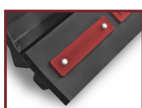


V60 ANGLE SNOW BLADE

Available widths 72", 84", 96", 108" & 120"



**OPTION:
POLY EDGE**



**OPTION:
RUBBER EDGE**



**OPTION:
PIN-ON WINGS**
Increase blade width by 21 3/4" and reduce spillage for less passes.

TWO-CYLINDER
HYDRAULIC ANGLE

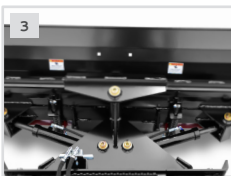
31.0"
BLADE
HEIGHT

1020-1225 LB
OVERALL WEIGHT
(VARIES BY MODEL)

**GREATER THAN
1500 LB**
LOADER OPERATING CAPACITY



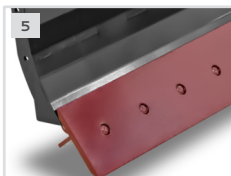
1. 4° SIDE-TO-SIDE OSCILLATION FOLLOWS UNEVEN SURFACES



3. ANGLE BLADE 30° LEFT OR RIGHT FROM INSIDE CAB



4. TRIP EDGE PROTECTS OPERATOR & EQUIPMENT



5. 5/8" x 8" REVERSIBLE STEEL BOLT-ON EDGE ALLOWS 5 1/2" OF WEAR

2. HYDRAULIC CROSSOVER RELIEF VALVE PROTECTS ATTACHMENT BY ANGLING BLADE UPON IMPACT

	MODEL	SBS72	SBS84	SBS96	SBS108	SBS120
Width: Overall, Straight / Full Angle (in.)		74.0 / 64.0	86.0 / 74.0	98.0 / 84.0	110.0 / 95.0	120.0 / 104.0
Overall Height (in.)				31.0		
Overall Depth, Straight (in.)				37.5		
Blade Angle (degrees)				(+/-) 30		
Moldboard Thickness (in.)				0.19		
Cutting Edge (in.)				5/8 x 8 Bolt-on		
Blade Oscillation (degrees)				(+/-) 4		
Cylinder Bore / Stroke (in.)				2.0 / 8.375		
Cylinder Pins / Hinge Pins Dia. (in.)				1.25 / 1.563		
Approximate Weight (lbs)		1020*	1075*	1130*	1185*	1225*
Recommended Loader Capacity				Greater than 1500 lbs		

*Weight with steel edge installed.