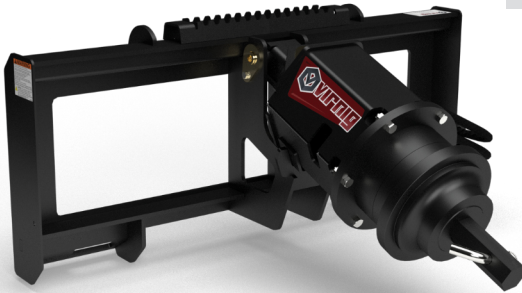


## AUGER DRIVES



View Available 4' Auger Bits on [page 53](#).

View Available 3' Auger Bits on [page 113](#).

## AUGER DRIVE



2" hex and 2 9/16" round output support up to 36" diameter bits.

**15-25 GPM**  
RECOMMENDED  
FLOW RATE

**280 LB**  
OVERALL  
WEIGHT

### MODEL: AD36

OUTPUT TORQUE		OUTPUT SPEED	
PSI	FT-LBS	GPM	RPM
2,500	2,275	16	54
3,000	2,730	20	67
3,500	3,190	24	81



**36" MAX**  
STANDARD/TREE  
AUGER BIT SIZE

**18" MAX**  
ROCK AUGER  
BIT SIZE

1. HOSES ROUTED FROM TOP OF HOUSING FOR DEEPER DRILLING
2. PLANETARY REDUCTION ENSURES LONGEVITY & CONSISTENT TORQUE
3. DIRECT DRIVE MOTOR WITH RELIEF VALVE PROTECTION
4. BI-DIRECTIONAL AUGER ROTATION

## HIGH TORQUE AUGER DRIVE



2" hex output & 20% more torque for the toughest drilling conditions.

**15-27 GPM**  
RECOMMENDED  
FLOW RATE

**305 LB**  
OVERALL  
WEIGHT

### MODEL: ADHT36

OUTPUT TORQUE		OUTPUT SPEED	
PSI	FT-LBS	GPM	RPM
2,500	2,790	16	44
3,000	3,345	22	61
3,500	3,905	27	74

